

West Central & Central Regional Centers
 January/February/March 2014
 Jeff Moates, Director



West Central

Becky O’Sullivan, Outreach Coordinator
 Kassie Kemp, Outreach Assistant
 Brittany Yabczanka, Program Assistant

Central

Lisa Hylton, Outreach Coordinator
 Nigel Rudolph, Outreach Assistant

Quarterly Report(s) – West Central & Central Regional Centers

West Central

Activity Type	Events	Attendees	Counties
Public Outreach	25	2,023	Sarasota, Pinellas, Highlands, Hillsborough, Lake, Citrus, Manatee, Polk, DeSoto, Pasco, Gulf
Training / Workshops	3	56	Pinellas, Marion
Government Assistance	2		Hillsborough
Meeting	15		Hillsborough, Alachua, Citrus, Pinellas
Social Media		38,637	
Press Contact	0		
Publication	0		
Direct Mail / Newsletter	4	3,915	

Central

Activity Type	Events	Attendees	Counties
Public Outreach	32	4,586	Sarasota, Pinellas, Citrus, Levy, Hillsborough, Hernando, Marion, Lake, Alachua, Manatee, Polk, DeSoto, Highlands, Gulf
Training / Workshops	4	56	Pinellas, Duval, Marion
Government Assistance	0		
Meeting	29		Citrus, Hernando, Hillsborough, Alachua, Pinellas
Social Media		0	
Press Contact	0		
Publication	0		
Direct Mail / Newsletter	1	982	

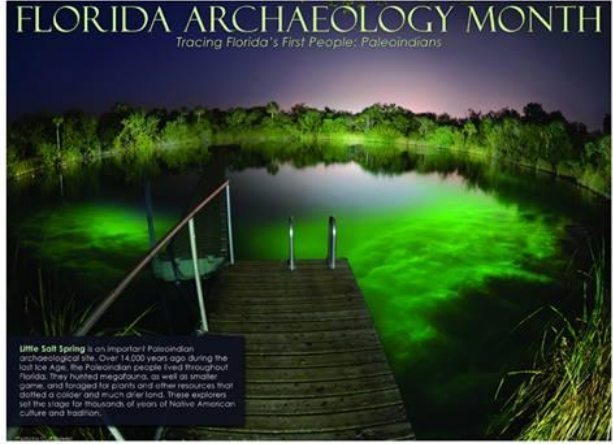
West Central Regional Center Quarter Highlights

- In addition to specifically designed table-top and classroom/library program-based activities, Florida Archaeology Month (FAM) events also included an *Archaeology Works*: EXPO and a public presentation on the archaeology of Little Salt Spring. Based on this year's theme highlighting the Paleoindian experience in Florida, staff designed specific activities, posters, and informational handouts that could be delivered to the public in a variety of settings. Staff also coordinated a public archaeology event based on our workshop series, *Archaeology Works*, at the Weedon Island Natural and Cultural History Center. For our culminating FAM event, we asked Dr. John Gifford to speak about his research and archaeological findings from Little Salt Spring at a public presentation on USF's Tampa campus.
- *Archaeology Works*, a public workshop series, continues to be a great public outreach model and creative outlet for staff. This quarter WCRC staff conducted two workshops covering topics in archaeology such as Dating and Fishing.

- Staff completed development this quarter of our *Jr. Archaeologist* 4th and 5th grade curriculum. Our next step is to format the units together into a single document and have available for review by our Educational Advisory Board.

Central Regional Center Quarter Highlights

- Staff attended Archaeological Resource Management (ARM) training in St. Johns County. Not only did Lisa and Nigel learn quite a bit about the inner workings of the Division of Historical Resources/Bureau of Archaeological Research, they also presented to the group on ways how FPAN assists land managers.
- Staff combined many different efforts to produce a wide range of Florida Archaeology Month events. Staff led informative discussions and hands-on activities based on the *Archaeology Works: Pottery* workshop. They also scheduled weekly Lunch with an Archaeologist sit downs, presenting on an array of archaeology topics. We also had archaeologist Steve Koski up to discuss the archaeology of Little Salt Spring.
- Staff completed a revamping of the Crystal River Archaeological State Park program *Sifting for Technology*. This is an interactive educational and excavation program for youth groups. With a more streamlined process and outline, staff and/or volunteer docents will be able to deliver an effective and principled program each and every time.



Archaeology at
Little Salt Spring
Dr. John Gifford
@USF Tampa Library
#FAM2014



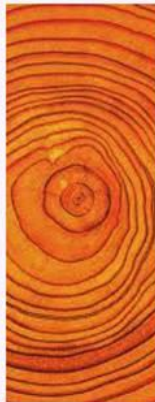
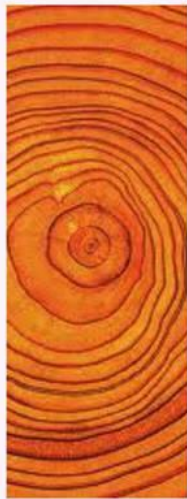
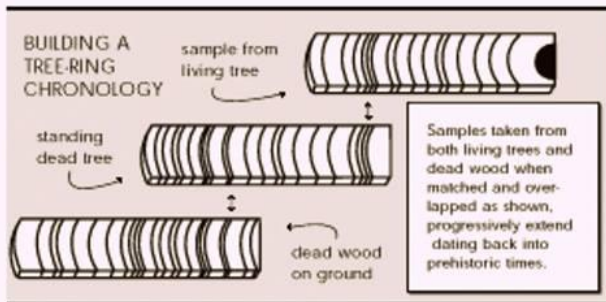
With Dr. John Gifford after his public presentation at USF (staff: Jeff Moates and Becky O'Sullivan)



Archaeology Works EXPO!
@Weedon Island, St Pete

FLORIDA
archaeology
MONTH 2014





FLORIDA PUBLIC
ARCHAEOLOGY
NETWORK

WWW.FLPUBLICARCHAEOLOGY.ORG

Archaeology Works: Dating at Weedon Island Natural and Cultural History Center



Sifting for Technology at the Crystal River Archaeological State Park